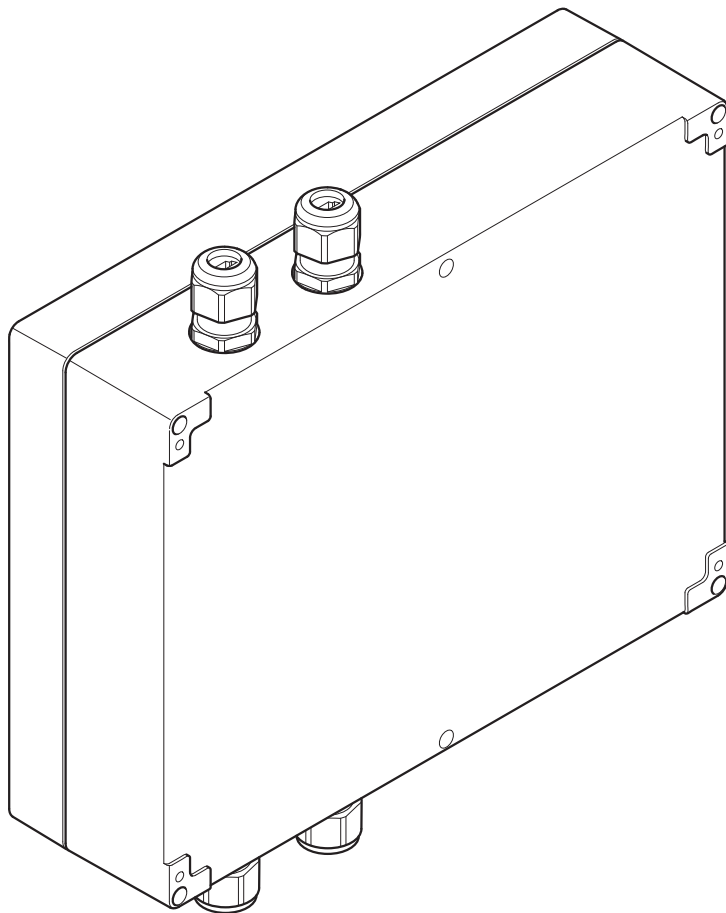




INSPIRED BY  
EFFICIENCY



## User manual

### Interroll PowerControl

**Manufacturer's address**

Interroll Engineering GmbH  
Hoeferhof 16  
D-42929 Wermelskirchen  
Tel. +49 2193 23 0  
Fax. +49 2190 2022  
[www.interroll.com](http://www.interroll.com)

**Copyright**

The copyright of this manual remains with Interroll Engineering GmbH. The operating instructions contain technical regulations and drawings which may not be reproduced partially or in full, transmitted by any means, utilized without permission for competitive purposes or disclosed to third parties.

## Table of contents

<b>Introduction</b>	
Information about the operating instructions . . . . .	2
Warnings in this manual . . . . .	2
Further symbols . . . . .	3
<b>Safety</b>	
General safety instructions . . . . .	4
Intended use . . . . .	4
Unintended use . . . . .	4
Dangers . . . . .	5
Interfaces to other devices . . . . .	5
Qualified persons . . . . .	5
<b>Product information</b>	
Product description . . . . .	6
Technical specifications . . . . .	7
Dimensions . . . . .	8
Type plate . . . . .	8
Scope of delivery . . . . .	8
Application notes . . . . .	9
<b>Transport and storage</b>	
Transport . . . . .	10
Storage . . . . .	10
<b>Assembly</b>	
Attaching the PowerControl to a conveyor . . . . .	11
Electrical installation . . . . .	12
<b>Initial startup and operation</b>	
Initial startup . . . . .	15
Operation . . . . .	15
<b>Maintenance and cleaning</b>	
Warning notices concerning maintenance and cleaning . . . . .	16
Maintenance . . . . .	16
Cleaning . . . . .	17
<b>Abandonment and disposal</b>	
Abandonment . . . . .	18
Disposal . . . . .	18
<b>Appendix</b>	
Installation declaration . . . . .	19

## Introduction

### Information about the operating instructions

#### Contents

This manual contains important advice, notes and information about the PowerControl in all phases of its lifecycle:

- Transport, assembly and start-up
- Safe operation, maintenance and troubleshooting, disposal
- Accessories

#### Validity of the manual

The manual describes the PowerControl as it is delivered by Interroll.

In addition to this manual, special contractual agreements and technical documents apply to special versions.

#### The manual is part of the product

- For trouble-free, safe operation and warranty claims, read the manual and follow the instructions before handling the PowerControl.
- Keep the manual near to the PowerControl.
- Pass the manual on to any subsequent operator or occupant of the PowerControl.
- Interroll does not accept any liability for faults or defects due to non-observance of this manual.
- If you have any questions after reading the operation manual, feel free to contact our customer service. See the last page for your local contact information.

### Warnings in this manual



The warnings in this document refer to risks which may arise while using the PowerControl. For relevant warnings, see *"Safety"*, page 4 and the warnings at the beginning of each chapter.

There are three categories of danger. The following signal words are used in the document as required:

- Danger
- Warning
- Caution

Signal word	Meaning
Danger	Indicates a hazardous situation which, if not avoided, will result in death or serious injury.
Warning	Indicates a hazardous situation which, if not avoided, could result in death or serious injury.
Caution	Indicates a hazardous situation which, if not avoided, may result in minor or moderate injury.

#### Structure of warnings

	<div style="background-color: black; color: white; padding: 5px; display: flex; align-items: center;">  <span style="margin-left: 5px;"><b>DANGER</b></span> </div> <p><b>Nature and source of the hazard</b> Possible consequence of non-observance</p> <p>➤ Information about how to avoid the hazard.</p>
---	---

## Introduction

### Further symbols

#### ***NOTICE***

**This symbol identifies possible material damage.**

➤ Information about how to avoid damage.



This symbol displays safety instructions.



This symbol marks useful and important information.

➤ This symbol marks the steps that have to be carried out.

## Safety

### General safety instructions

The PowerControl is designed according to the technical state of the art and is reliable in operation, once distributed. However, risks may still arise.

- Risks of physical injury to the user or bystanders.
- Adverse effects of the PowerControl and other material.



Disregarding the warnings in this manual may lead to serious injury.

- Always read the entire operating and safety instructions before starting to work with the PowerControl and follow the information contained herein in full.
- Only instructed and qualified persons may work with the PowerControl.
- Always keep this user manual at hand when working on the PowerControl so that you can consult it quickly if required.
- Always comply with relevant national safety regulations.
- If you have any questions after reading this user manual, feel free to contact our customer service. See the last page for contact information.

### Intended use

The PowerControl serves as a power supply for the Interroll RollerDrives and their controls.

The PowerControl must only be used for industrial applications and in an industrial environment. It must be integrated into a conveyor module or conveyor system. Any other use is considered inappropriate.

Any modifications that affect the safety of the product are not permitted.

The PowerControl may only be operated within the defined operating limits.

### Unintended use

Applications not according to the intended use of the PowerControl require approval from Interroll.

## Safety

### Dangers



#### Bodily injury

The following list provides information about the various types of danger or damage that may occur while working with the PowerControl.

- Maintenance or repair work must only be performed by authorized and qualified persons in accordance with the applicable regulations.
- Before using the PowerControl, ensure that no unauthorized persons are near the conveyor.

#### Electricity

- The requirements for electrical equipment of machinery and machine systems (DIN EN 60204-1) must be observed during project planning, installation, operation, maintenance and servicing.
- Only perform installation and maintenance work after you have switched off the power.
- Ensure that the power cannot be turned on accidentally.



Improper handling of system components or working on the installation when it is not in an activated state can result in short dangerous flashovers (fire risk) of > 700 W due to the relatively high power output.

#### Working environment

- Do not use the PowerControl in areas where there is a hazard of explosion.
- Remove equipment or material which is not required from the workspace.

#### Faults during operation

- Regularly inspect the PowerControl for visible damage.
- Make sure that the operating conditions are observed during the service life and that dangerous operating conditions are eliminated.
- If you notice smoke, switch off the power immediately and ensure that it cannot be switched on again accidentally.
- Contact qualified personnel immediately to find the source of the fault.

#### Maintenance

- Because the product does not require maintenance, you only need to inspect the PowerControl regularly for visible damage and that all cables and screws are firmly in place.

### Interfaces to other devices

By assembling the PowerControl in a conveyor module, further hazards may occur. These hazards are not part of this manual and have to be analyzed during the design, installation and startup of the conveyor module.

- After assembling the PowerControl in a conveyor module, check the whole system for a new potential dangerous spot before switching on the conveyor.

### Qualified persons

Qualified persons are persons who read and understand the manual and, taking national regulations into account, can competently execute incidental work.

Only instructed and qualified persons may work with the PowerControl, taking the following into account:

- the relevant manuals and diagrams,
- the warning and safety instructions in this manual,
- the system specific regulations and requirements,
- national or local regulations and requirements for safety and accident prevention.

## Product information

### Product description

The PowerControl is a component of the Interroll controller concept. It supplies the Interroll controls with 24 VDC operating voltage and provides the rated power for the RollerDrive.

### Functions

- Providing 24 VDC system voltage
- Peak load and start-up current for greater performance requirements up to 30 A @ 24 VDC for 4 s
- IP54 protection rating
- 100 % duty cycle, maintenance-free, any installation position
- Self-protection against overload, reverse voltage, short circuit and load drop
- System compatible due to low cold start current (inrush) and active power factor correction
- No power reduction (derating) over the entire operating temperature range of the Interroll controls
- Multiple terminal points on mains and load side; no special connector required
- Cable entry via M20 fittings including seals, mounted or included
- CE-compliant



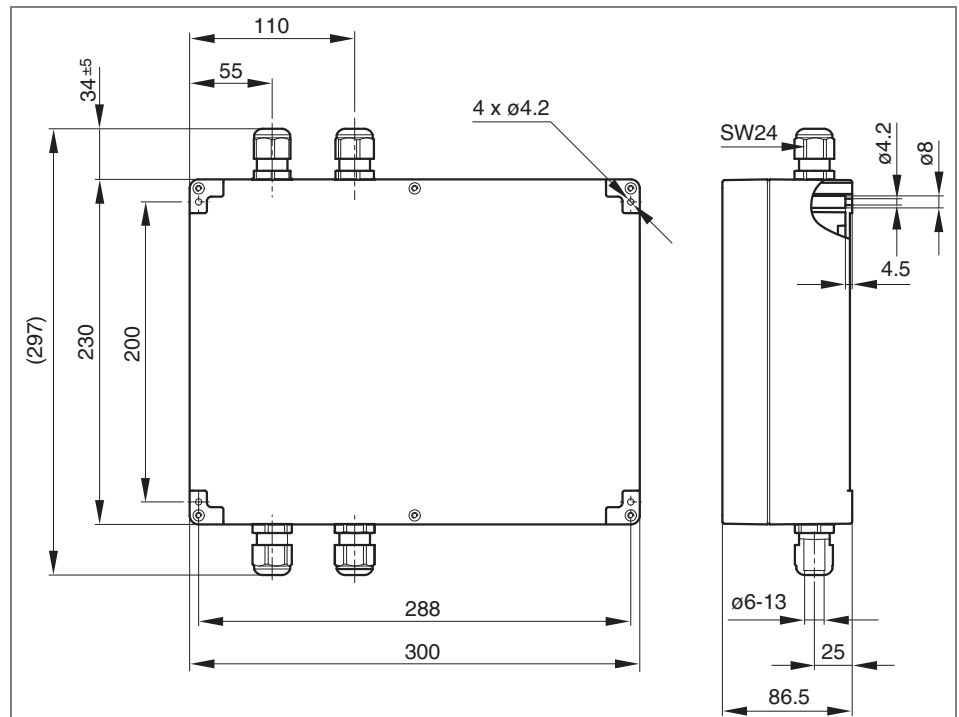
## Product information

### Technical specifications

Rated supply voltage	400 VAC, 3 phases, PE (no phase grounded, no neutral conductor required)
Mains voltage range	380 to 480 VAC $\pm$ 15 %
Mains frequency	50 to 60 Hz $\pm$ 6 %
Mains power consumption	typically 0.8 A per phase @ 3 x 400 VAC
Mains cold start, inrush	typically 3 A @ 400 V
Rated output voltage	24 VDC $\pm$ 0.2 V
Rated output power	480 W
Rated peak power	max. 720 W @ 24 VDC for 4 s, repetition rate depends on duration and actual peak load
Maximum output current	30 A @ 24 V for 4 s
Ripple/noise	100 mVpp, 20 Hz to 20 MHz, 50 Ohm
Feedback resistance	max. 32 VDC, same polarity; superimposed alternating voltage not permitted
Short-circuit current	20 A permanent + max. 15 % (depending on loop impedance)
Protection classification	1 (PE)
Protection rating	IP54 (when installed correctly)
Conformity	CE (EN 55011, EN 55022, EN 61000-3-2, EN 61000-4-3, EN 61000-4-4, EN 61000-4-5, EN 61000-4-6, EN 61000-4-2)
Parallel switching of the output voltage	not permitted
Permissible ambient temperature in operation	-28 °C to 40 °C (-18 °F to 104 °F)
Permissible ambient temperature for transport and storage	-40 °C to 85 °C (-40 °F to 185 °F)
Permissible temperature change	DIN EN 60068-2-14
Permissible ambient humidity	DIN EN 60068-2-78, 93 % @ 40 °C, non-condensing
Installation height above sea level	max. 1000 m (max. 3300 ft)
Installation position	any
Mechanical stress	DIN EN 60068-2-6, DIN EN 60068-2-27
Weight	approx. 2.5 kg (5.5 lbs)
Dimensions	see page 8
Box	Plastic (ABS), RAL 7035

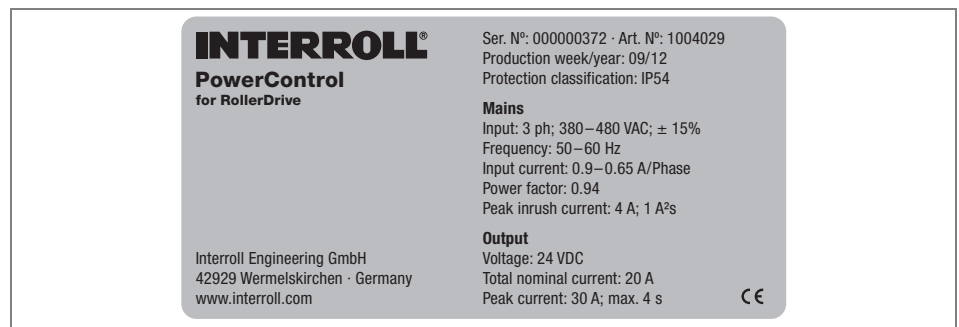
## Product information

### Dimensions



### Type plate

The information on the label is used to identify the PowerControl.



### Scope of delivery

The PowerControl contains the following components:

- PowerControl
- 2 seals for M20 screw connection, suitable for round cable diameter 6 - 13 mm
- Connector cable, pre-assembled for grounding the minus pole, 2.5 <sup>2</sup> mm, green-yellow

The mounting screws for attaching the PowerControl are not included in the delivery.

## Product information

### Application notes

The following information is intended to assist operators use the PowerControl. This information may not be complete. In specific cases, it must be examined to what extent the actual conditions under which this information is applicable. The applicable safety and installation rules at the respective operating location take precedence.

#### Grid-side connection and fuse protection

The PowerControl does not contain any internal instrument fuses. Due to the operating principle of the power supply, overloads on the load end are not transferred to the mains connection. The appropriate grid-side protective devices would therefore be ineffective.

The dimensions of the grid-side fuse(s) can focus on the line protection. If, only a PowerControl is connected after the fuse, it will work with a minimum protection from circuit breaker B6 or C3 (limiting current integral  $1A^2s$ ).

To ensure full performance of the PowerControl, the use of a phase monitor or chained fuses is recommended on the grid side.



A longer/more permanent operation of the PowerControl with only two phases is not permitted.

#### Load-end connection and fuse protection

It is basically impossible for the PowerControl to be destroyed by an overload. For this reason, the PowerControl does not require any load side fuses to protect the device.

In case of an overload, the output voltage fails – in extreme cases to 0 V and the PowerControl limits the load current automatically to 20 A (projected value +15% max.). After the overload condition is eliminated, the normal operating state is resumed automatically.

The automatic mode change of the PowerControl from constant voltage to constant current mode in case of overloading allows the load circuit to be designed without using an additional line protection, taking into account the requirements of EN 60204-1 and DIN VDE 0298-4.

#### Conveyor with multiple PowerControl

If the required performance exceeds the maximum capacity of a PowerControl, then the use of a second PowerControl is needed. The parallel connection of the load terminals of two or more PowerControl is **not** permitted.

All PowerControls must be powered up at the same time, otherwise the Interroll Controls can fail to initialize. (refer to notes in the operating manuals for the respective Interroll controls).

To simplify installation, the mains connection can be daisy chained. For this purpose, each PowerControl has an additional terminal space and additional M20 cable screw connection for connecting an additional PowerControl. During project planning, observe the relevant requirements with respect to the load capacity of the feed line, fusing and switching requirements.

Connecting the ground of the load connection terminal block with PE flat plug (grounding, PELV) in the PowerControl ensures a sufficient ground equalization between the supply areas when the PE is installed correctly. This potential compensation must not be used in operation as PE (protective earth). No so-called ground loops must be created as a result of improper power line installation.

## Transport and storage

### Transport

- Every PowerControl is packaged in its own cardboard box.

#### **NOTICE**

**There is a risk of damage to property if transported incorrectly.**

- Only qualified and authorized persons should transport the product.
  - Follow the instructions below.
- 
- Do not stack more than four cardboard boxes on top of each other.
  - Check that the boxes are correctly fixed in place prior to transport.
  - Avoid serious impacts during transport.
  - Check every PowerControl for visible damage after transport.
  - In the event of damage, take photos of the damaged parts.
  - To maintain the warranty, report any damage caused by transport instantly to the transport company and Interroll.
  - Do not expose the PowerControls to serious temperature fluctuations as this could result in condensation.

### Storage



#### **CAUTION**

**Risk of injury due to improper storage**

- Do not stack more than four carton boxes on top of each other.
- 
- Check each PowerControl for damage after storage.

## Assembly

### Attaching the PowerControl to a conveyor

The PowerControl is attached to the conveyor frame with 4 screws (diameter 4 mm, not included with delivery). Screw type and length depend on the mounting surface. M4 cylinder head screws are recommended.

#### **NOTICE**

##### **Risk of damage leading to failure or shortened life expectancy**

- Check each PowerControl visually for damage before assembly.
- Make sure that the housing is not warped during installation (no bending or torsion).
- Do not mount the PowerControl above heat sources. Ensure there is always natural air circulation around the unit.
- Do not drill additional mounting holes in the casing or enlarge the holes provided.
- Do not drop the PowerControl to prevent internal damage.



The IP54 protection rating can only be ensured when installation is performed properly.

- Locate a flat surface for mounting the PowerControl. Make sure that there is enough space to remove the cover and the inlet and outlet of the power and load cables. Note the bending radius of the cables when doing so.
- Remove the PowerControl cover.
- Use the PowerControl as a template and mark the center of the four mounting holes. For the distance between the holes, see *"Dimensions", page 8*.
- Drill four mounting holes with  $\varnothing$  4 mm bit on the markings.
- Fasten the PowerControl.
- Make sure that the screws cannot loosen due to vibration or shock and that no warping inside the casing has occurred.

## Assembly

### Electrical installation

All cable screw connections are of the type M20. To simplify attachment of the cables, they can be removed from the housing. No wrench is required for loosening and tightening the nuts.

In its as-delivered state, the screw connections for the mains connection contain O-ring seals for cables with an outer diameter 6 to 13 mm. One screw connection also contains a removable dust guard. The screw connections for the load connection contain profile flat cable seals.

Stranded wires should be used for the cables. These can be clamped directly without a ferrule (max one conductor per terminal point).



#### **DANGER**

##### **Danger to life from electrical shock**

- All electrical work should only be performed by qualified and authorized persons.
- Disconnect the system from power supply before installing, removing or rewiring the PowerControl.
- Ensure that both during operation and in case of errors no hazardous voltage can access the connections or the housing.
- Do not expose cables to excessive strain, pressure or bending. Bending the cable can cause damage to the insulation.
- Switch on the operating voltage only once all cables are connected and the cover of PowerControl is attached.

#### **NOTICE**

##### **Risk of damage to the PowerControl**

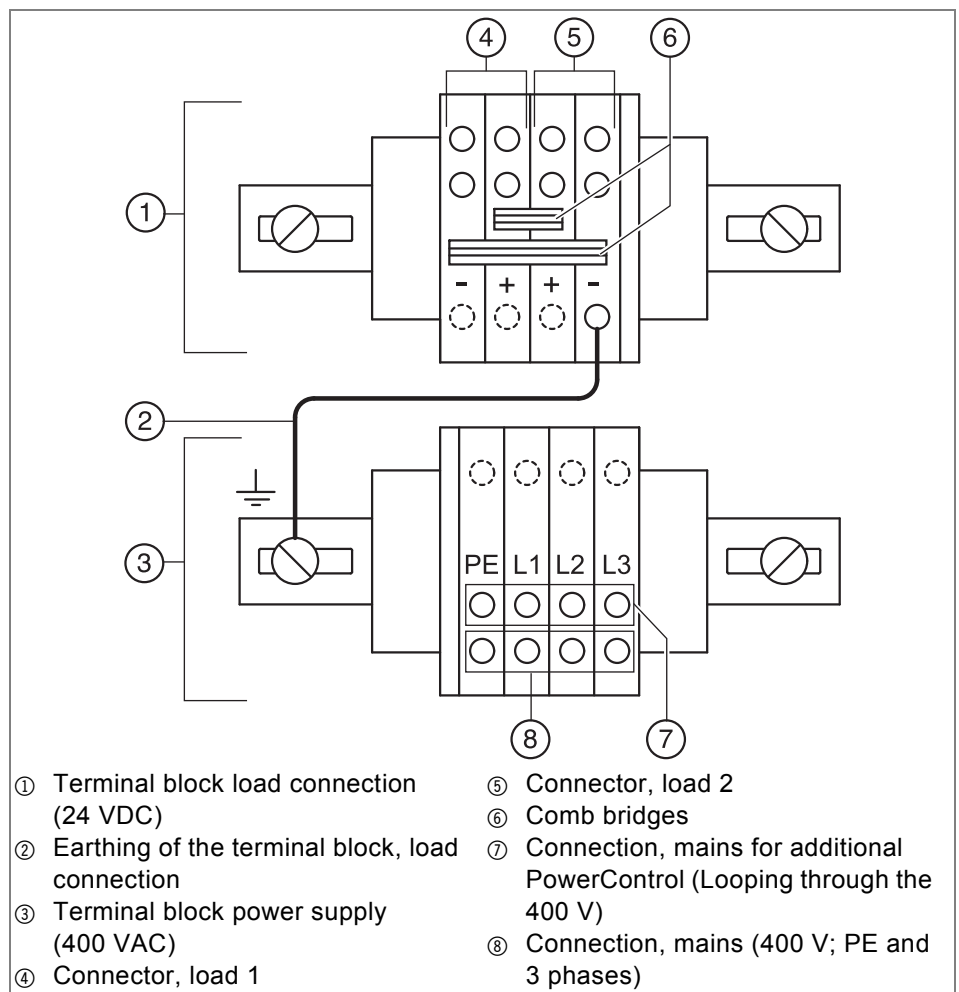
- Only use cables with the right dimensions for the specific conditions, particularly with respect to cross-section and insulation.
  - When opening the housing, make sure that no dust or dirt can collect inside the housing.
  - Ensure that the RollerDrive, the control and the PowerControl are connected to the conveyor frame or supporting structure in such a way that they are properly earthed. Incorrect earthing can result in the build-up of static charge, causing the motor or control to malfunction or fail prematurely.
- 
- Guide the cable through the screw fitting located closest to the respective terminal.
  - If necessary, turn the profile cable seals 180° to match the orientation/polarity of the cable.
  - If the load is not connected via the profile flat cable, replace the profile flat cable seal with a seal appropriate for the cable type being used. O-seals for round cables with a sheath diameter of 6 to 13 mm are included with the delivery.

## Assembly

- If the mains connection is to be guided through for an additional PowerControl, remove the dust cap on the appropriate screw connection. Do not pierce the dust cap.
- Ensure that all screw connections are available and provided with the appropriate seals. If necessary, replace defective screw connections with new ones. Use only size M20 screw connections together with the housing that guarantee a protection rating of at least IP54 without requiring an additional seal ring.
- Strip lines appropriately and remove the insulation along the appropriate length of the line.
- Connect lines as shown in the terminal diagram.



Terminals of the type WAGO-TOPJOB are installed in the PowerControl. The manufacturer's instructions for assembly and releasing the line connections for this type of terminal must be observed. The WAGO TOPJOB tool or other appropriate tool must be used to actuate the terminals.



## Assembly



- The PE conductor must always be connected.
- The clamping of the phases must match the labeling on the terminals.
- If a 5-pin cable with accompanying neutral conductor is used for the power supply, it must be installed in the device in such a way that no contact is possible with any other operational part that is energized or conductive.
- The comb bridges in the load connection terminal block must not be removed.
- To provide a protective extra low voltage (PELV) in accordance with EN 60204-1, the connecting line included with the delivery must be connected with the earth of the load connection terminal block and the PE flat plug (earthing) (see terminal diagram). Without this connection, none of the poles of the load connection terminal block will be connected to the earth (complete galvanic isolation).
- Providing PELV is absolutely necessary when using Interroll ZoneControl or ConveyorControl.



The switching state PELV must be lifted while performing an isolation test. The operator is responsible for ensuring that the correct switching state restored afterwards.

- If necessary, perform any additional tests after mounting and installation and before switching on for the first time as required by the applicable regulations at the location of use.
- Reattach the cover to the housing and screw down.



## Initial startup and operation

### Initial startup



#### Checks before initial startup

- Ensure that the PowerControl has been correctly fastened to the profile and that all screws have been correctly tightened.
- Ensure that there are no additional areas of danger caused by interfaces to other components.
- Ensure that the wiring is in accordance with the specification and legal directives.
- Check all protection devices.
- Ensure that no bystanders are in dangerous areas around the conveyor.

#### Pre-commissioning checks

- Check the PowerControl for visible damage.
- Make sure that the cover is attached and all screw connections are in place.
- Check all protection devices.
- Ensure that no bystanders are in dangerous areas around the conveyor.

### Operation

	<div style="border: 1px solid black; padding: 5px; margin-bottom: 10px;">  <b>CAUTION</b> </div> <p><b>Accidental start-up of the RollerDrive</b>              Danger of crushing of limbs and damage to goods</p> <ul style="list-style-type: none"> <li>➤ Ensure that no unauthorized persons are near the conveyor before switching on the operating voltage.</li> </ul>
---	--



Ambient conditions during operation see *"Technical specifications"*, page 7

The PowerControl delivers the 24 V system voltage as soon as the power supply is switched on.

## Maintenance and cleaning

### Warning notices concerning maintenance and cleaning



#### CAUTION

##### Risk of injuries due to incorrect handling

- Maintenance work and cleaning must only be performed by qualified and authorized persons.
- Perform maintenance work only after switching off the power. Ensure that the system cannot be switched on accidentally.
- Set up signs indicating that maintenance work is in progress.

### Maintenance

#### Inspecting the PowerControl

The PowerControl itself is maintenance-free. For avoidance of faults however, regular inspection of the connections and fixings is recommended.

- As part of regular inspection and maintenance on the conveyor, also check the PowerControl in accordance with the legal requirements applicable at the location of use. Observe the following items in particular:
  - proper functioning of the protective ground connector
  - ensuring proper isolation
  - all cable connections and screw connections tightly in place
  - general integrity of all components

For isolation tests, the following test voltages are permissible:

- 24V DC (+) and (-) shorted/PE: max. 500 VAC, 5 s
- L1, L2, L3 shorted / PE: max. 2000 VAC, 5 s

#### Replacing the PowerControl

If a PowerControl is damaged (e. g. soaked by corrosive liquids from transport goods, cracks or breaks in the casing, etc.), it must be immediately disconnected from the mains, labeled as defective and replaced. This also applies to all the cables and screw connections.

- Install a new PowerControl (see *"Abandonment"*, page 18 and see *"Attaching the PowerControl to a conveyor"*, page 11).
- If the PowerControl is removed from the line-side interconnection, make sure that the open terminal points are appropriately protected. Take particular care to ensure that the PE connection remains in compliance with standards.

## Maintenance and cleaning

### Cleaning

As per protection rating IP54, the PowerControl is resistant to dirt and liquids. Under normal conditions, no cleaning for functional reasons is required.

- However, if cleaning does become necessary, vacuum out or use a damp cloth to wipe the housing. Do not use detergents or solvents.
- If you need to open the housing, make sure when opening the housing that no dust or dirt can collect inside the housing.



If dirt particles, liquids or small parts (wire cuttings, screws, etc.) get inside the power supply or in the terminals, the PowerControl must not continue to be used. This applies in particular to liquids, even if these drain out again or have dried.



### **DANGER**

#### **Danger to life from electrical shock**

- Do not use a screwdriver, wire or similar object to remove foreign particles in the power supply or in the terminals.

## Abandonment and disposal

### Abandonment



#### **CAUTION**

##### **Risk of injury due to improper handling**

- Abandonment may only be executed by qualified and authorized persons.
- Only abandon the PowerControl after switching off the power. Ensure that the PowerControl cannot be turned on accidentally.

- Disconnect all cables from the PowerControl.
- Unscrew the screws attaching the PowerControl to the conveyor frame.
- Extract the PowerControl from the conveyor frame.

### Disposal

The operator is responsible for the proper disposal of the PowerControl. In doing so, industry-specific and local provisions must be observed for the disposal of the PowerControl and its packaging.

## Appendix

### Installation declaration

in accordance with the EC Machinery Directive 2006/42/EC, Appendix II B,

#### the manufacturer:

Interroll Engineering GmbH  
Hoferhof 16  
D - 42929 Wermelskirchen  
Germany

hereby declares with sole responsibility that the product range

- PowerControl

**is not a ready-to-use machine as defined by the EC Machinery Directive and, therefore, does not fully comply with the requirements of this directive. The commissioning of these conveyor modules is not permitted unless conformity of the entire machine/system in which they are installed has been declared in compliance with the EC Machinery Directive.**

The health and safety requirements as stated in Appendix I have been applied. The special technical documents mentioned in Appendix VII B have been prepared and will be sent to the responsible authority if necessary.

Person authorized to prepare the technical documents: Georg Malina, Interroll Engineering GmbH, Hoferhof 16, D - 42929 Wermelskirchen

#### Applied EC Directives:

- Machinery Directive 2006/42/EC
- EMC Directive 2004/108/EC
- RoHS Directive 2002/95/EC

#### Applied harmonized standards:

- EN ISO 12100 Parts 1 and 2 "Safety of machinery - Basic concepts, general principles for design" - Part 1: "Basic terminology, methodology" - Part 2: "Technical principles"

Wermelskirchen, 1 March 2013

Armin Lindholm  
(Managing Director)

(This declaration can be obtained at [www.interroll.com](http://www.interroll.com), if needed.)



## Europe

### Austria

Tel +49 2193 23 187  
at.sales@interroll.com

### Belgium

Tel. +49 2193 23 259  
be.sales@interroll.com

### Czech Republic

Interroll CZ, s.r.o.  
Na Rádku 7/3172  
69002 Břeclav  
Czech Republic  
Tel +420 519 330 210  
cz.sales@interroll.com

### Denmark

Interroll Nordic A/S  
Hammerholmen 2-6  
2650 Hvidovre  
Denmark  
Tel +45 36 88 33 33  
dk.sales@interroll.com

### Finland

Interroll Nordic A/S  
Martinkyläntie 53  
01720 Vantaa  
Finland  
Tel +358 9 54 94 94 00  
fi.sales@interroll.com

### France

Interroll SAS  
Z.I. De Kerannou-BP34  
29250 Saint-Pol-de-Leon  
France  
Tel +33 2 98 24 41 00  
fr.sales@interroll.com

### Germany

Interroll Fördertechnik GmbH  
Höferhof 16  
42929 Wermelskirchen  
Germany  
Tel +49 2193 23 0  
de.sales@interroll.com

### Hungary

Lőrincz Kft.  
Kastély U.27  
Pf. 57  
2045 Törökbálint  
Hungary  
Tel +36 23 337 891  
hu.sales@interroll.com

### Iceland

IBH ehf  
Dugguvogur 10  
104 Reykjavík  
Iceland  
Tel +354 562 6858  
ingi@ibh.ehf.is

### Italy

Rulli Rulmeca S.P.A.  
Via Arturo Toscanini 1  
24011 Almè (Bg)  
Italy  
Tel +39 035 43 00 111  
vendite@rulmeca.it

### Luxembourg

Tel +49 2193 23 259  
be.sales@interroll.com

### Netherlands

Tel +49 2193 23 151  
nl.sales@interroll.com

## Norway

Interroll A/S  
Kobbervikdalen 65  
3036 Drammen  
Norway  
Tel +47 32 88 26 00  
no.sales@interroll.com

## Poland

Interroll Polska Sp. z o.o.  
ul. Płochocińska 85  
03-044 Warszawa  
Poland  
Tel +48 22 741 741 0  
pl.sales@interroll.com

## Portugal

Rulmeca de Portugal, LDA  
Parque Industrial do Tortosendo  
Edifício Parkurbis, Loja 7  
Apartado 113  
6200-865 Tortosendo  
Portugal  
Tel +351 275 33 07 80  
rulmeca@rulmeca-interroll.pt

## Romania

Krako International SRL  
Str. Sfânta Maria 1-5  
Bl. 10A4  
Sc 1 Apt 4 Sector 1  
001494 Bucuresti  
Romania  
Tel +40 21 260 2050  
ro.sales@interroll.com

## Slovenia

3-TEC, prehrambena-  
tehnologija-hlajenje  
Dravska ulica 7  
1000 Ljubljana  
Slovenija  
Tel +386 1 56 56 370  
si.sales@interroll.com

## Spain

Interroll España S.A.  
Parc Tecnològic del Vallès  
C/Dels Argenters, 5 Edificio 1  
Bp y Cp  
08290 Cerdanyola del Vallès  
Barcelona  
Spain  
Tel +34 90 211 0860  
es.sales@interroll.com

## Sweden

Interroll Nordic A/S  
Karlsrovägen 64  
302 41 Halmstad  
Sweden  
Tel +46 35 227 077  
se.sales@interroll.com

## Switzerland

Tel. +49 2193 23 190  
ch.sales@interroll.com

## United Kingdom

Interroll Ltd.  
Brunel Road  
Corby, Northants NN17 4UX  
United Kingdom  
Tel +44 1536 200 322  
gb.sales@interroll.com

## Africa

### South Africa

Interroll South Africa (Pty) Ltd  
Box 327  
Isando 1600  
Gauteng  
South Africa  
Tel +27 11 281 99 00  
za.sales@interroll.com

## North and South America

### Canada

Interroll Checkstand  
8900 Keele Street  
Unit 2 & 3  
Concord, Ontario L4K 2N2  
Canada  
Tel +1 905 660 4426  
ca.sales@interroll.com

Interroll Canada Ltd.  
1201 Gorham Street  
Newmarket Ontario L3Y 8Y2  
Canada  
Tel +1 905 727 33 99  
ca.sales@interroll.com

### USA

Interroll Corporation  
3000 Corporate Drive  
Wilmington, N.C. 28405  
USA  
Tel +1 910 799 1100  
us.sales@interroll.com

Interroll Automation LLC  
5035 Keystone Boulevard  
Jeffersonville, IN 47130  
USA  
Tel +1 812 284 1000  
us.sales@interroll.com

Interroll Dynamic Storage, Inc.  
232 Duncan Circle  
Hiram, GA 30141  
USA  
Tel +1 770 943 15 41  
ca.sales@interroll.com

### Brazil

Interroll Logística  
Elementos para Sistemas  
Transportadores Ltda  
Rua Dom João VI  
555 - Parque Industrial SA  
Pindamonhangaba-SP  
CEP 12412-805  
Brazil  
Tel +55 (0)12 3648 8021  
br.sales@interroll.com

## Asia

### China

Interroll (Suzhou) Co. Ltd.  
Block B & C  
Ecological Science Hub  
No. 1 Ke Zhi Road  
Suzhou Industrial Park  
Jiangsu Province  
China  
Postal Code: 215021  
Tel +86 512 62560383  
cn.sales@interroll.com

### India

Interroll Drives and Rollers  
India Pvt. Ltd.  
No. 276, 4th main, 4th phase  
Peenya Industrial Area  
Bangalore-560058  
India  
Tel +91 080 41272666  
in.sales@interroll.com

### Israel

Comtrans-Tech Ltd.  
P.O.B. 17433  
Tel-Aviv 61174  
Israel  
Tel +972 54 4272747  
il.sales@interroll.com

## Japan

Interroll Japan Co. Ltd.  
302-1 Shimokuzawa  
Midori-ku  
Sagamihara-shi  
Kanagawa 252-0134  
Japan  
Tel +81 42 764 2677  
jp.sales@interroll.com

## Korea

Interroll (Korea) Co. Ltd.  
Rm 301  
Dongsan Bldg. 333-60  
Shindang-Dong  
100-826 Choong Ku, Seoul  
Tel +82 2 2231 19 00  
kr.sales@interroll.com

## Singapore

Interroll (Asia) Pte. Ltd.  
386 Jalan Ahmad Ibrahim Jurong  
629156 Singapore  
Republic of Singapore  
Tel +65 6266 6322  
sg.sales@interroll.com

## Sri Lanka

Colombo Machinery  
& Equipment Ltd.  
No: 102, Fife Road  
Colombo 05  
Sri Lanka  
Tel +94 11 250 0078/79  
lk.sales@interroll.com

## Taiwan

First Auto-Transfer Equipment  
Co. Ltd  
8F-3, No: 65, Song De Road  
Hsin Yi District  
Taipei 11076  
Taiwan  
Tel +886 2 27 59 88 69  
tw.sales@interroll.com

## Thailand

Interroll (Thailand) Co. Ltd.  
700/685, Moo 1  
Amata Nakorn  
Panthong, Chonburi  
20160  
Thailand  
Tel +66 3 844 7448  
th.sales@interroll.com

## Australia and New Zealand

### Australia

Interroll Australia Pty. Ltd.  
70 Keon Parade  
Thomastown  
Victoria 3074  
Australia  
Tel +61 3 94 60 21 55  
au.sales@interroll.com

### New Zealand

Automation Equipment  
(NZ) Ltd.  
26 Tawn Place,  
Pukete, Hamilton  
New Zealand  
Tel +64 (7) 849 0281  
nz.sales@interroll.com

Headquarter  
Interroll (Schweiz AG)  
+ 41 91 850 25 25  
info@interroll.com

[www.interroll.com](http://www.interroll.com)